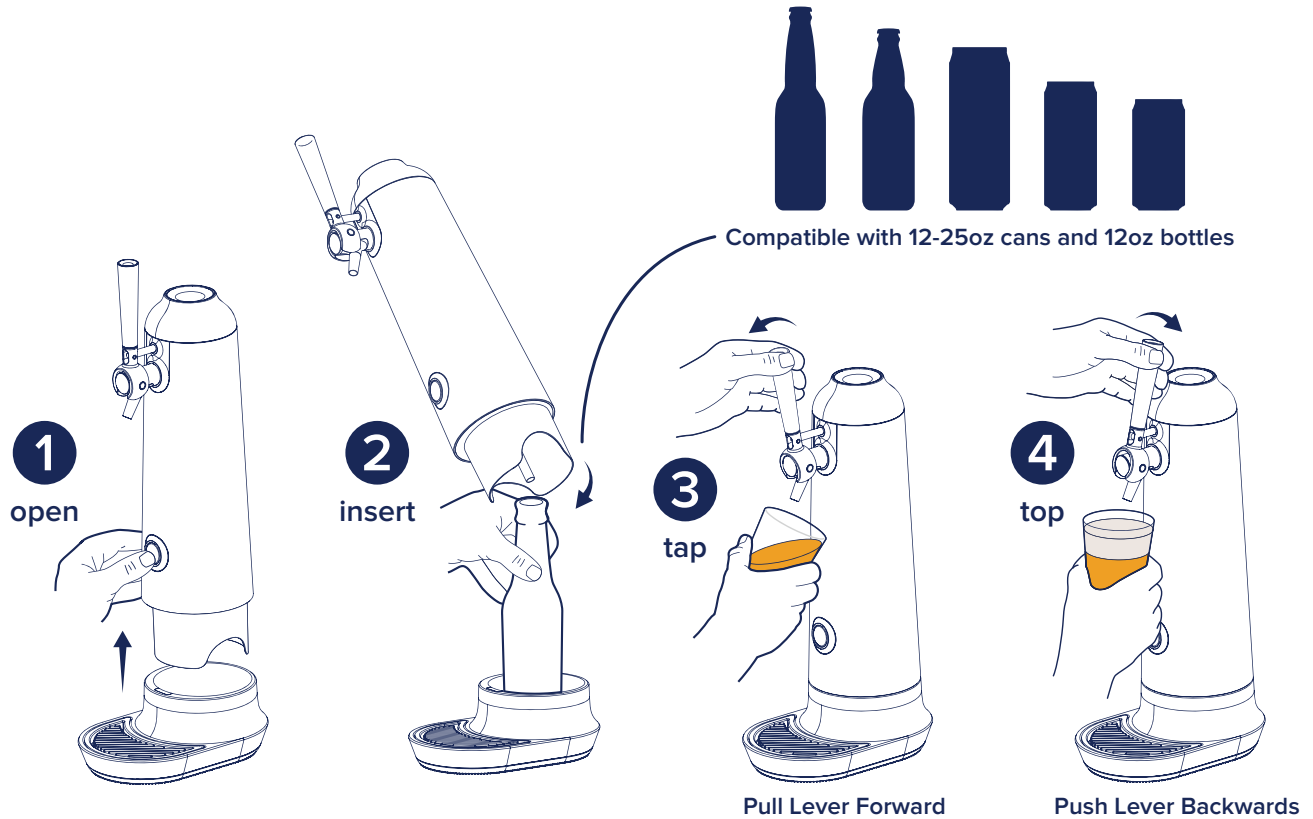


Operation

- Press button to unlock and lift system from system base (Figure 1).
- Insert can or bottle into system base (Figure 2). Tilt and lower system until tube is inserted into can or bottle, and the system locks into system base.
- Place glass under faucet at 45° angle. Pull handle forward to "tap" beer (Figure 3) until the glass is 2/3 filled.
- When you are ready to "top" your beer, straighten the glass and hold under faucet and push handle backward for desired amount of Micro-Foam (Figure 4). Generally 1-2 seconds is ideal.



System Cleaning

- Press button to unlock and lift system from system base.
 - Place a tall glass filled with warm water into system base. Lower system so tube is inserted into glass and system locks into system base.
 - Place a separate glass under the faucet. Pull handle forward to run water through system for 5 seconds.
 - Antimicrobial drip mat is removable for easy cleaning. If required wipe off system and tube with a damp cloth.
- CAUTION: DO NOT SPRAY WATER INTO THE SYSTEM, FILL THE SYSTEM WITH WATER OR PLACE ANY PART OF SYSTEM IN THE DISHWASHER.**



Patent Pending

FIZZICS
WAYTAP